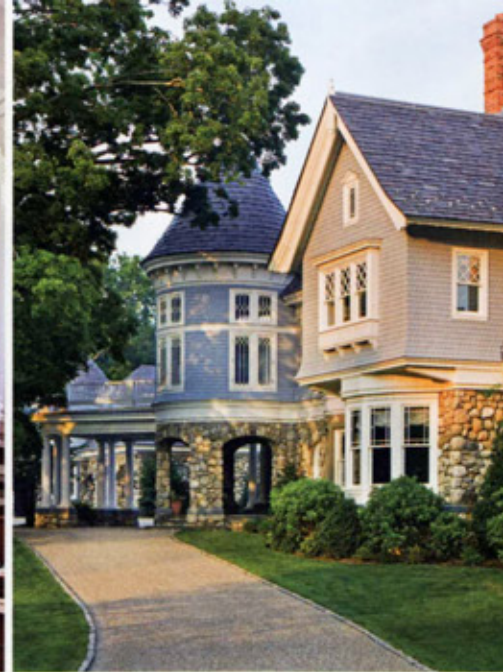


\$5.00 APRIL 2011

QUEST

THE
ART & DESIGN
ISSUE





REFINED ROMANCE



WHEN THE OWNERS of this picturesque Queen Anne Manor house in Greenwich, Connecticut, began their design journey with noted architectural firm Wadia Associates, they asked that the house be as “low-key” as possible—especially when viewed from the street and upon approach. And, although asymmetry is a hallmark of Queen Anne architecture, this waterfront home’s design was determined more by this design edict combined with the funnel-shaped contours of the property on which the house is built.

The design of the building stays true to classic Queen Anne vernacular. The house has a steeply pitched slate roof with high decorative peak ornaments punctuating the fragmented roofline. Patterned shingles, overhanging stories, and an entrance tower are all present in the design and reinforce this period style. Additionally, the detailing inside and outside of the home is also typically eclectic with medieval paneled chimneys, classical porch columns, and the use of a

variety of exterior building materials, including fieldstone, brick, and slate. All of these design elements combine to create the charming appeal of this gracious home.

The house itself unfolds slowly, with interesting twists and turns, which keep its actual size hidden. All the rooms are designed to overlook the Long Island Sound, but in the warmer months, the family prefers to take in the view from a wide porch that extends the length of the house. Romantic and refined, this project represents the best of the Queen Anne-style architecture for a modern family. ♦

Above: a Queen Anne-style home in Greenwich, Connecticut. Opposite, top row: quirky fireplaces are a hallmark of Queen Anne-style architecture; the living room; the house unfolds slowly upon approach. Second row: the dining room; the tower is another hallmark of Queen Anne style; the staircase. Third row: the kitchen faces the Long Island Sound; the pool; the family wanted a low-key home.